

Digital Full Colour Production Printer

# RICOH Pro™ C7500

✓ Printer

**RICOH**  
imagine. change.



**RICOH Pro  
C7500\***

95  
ppm Black & white  
Full colour

**RICOH Pro  
C7500**

85  
ppm Black & white  
Full colour

\*With Productivity Upgrade option

# A new palette of special effects. A new world of expressive possibilities.

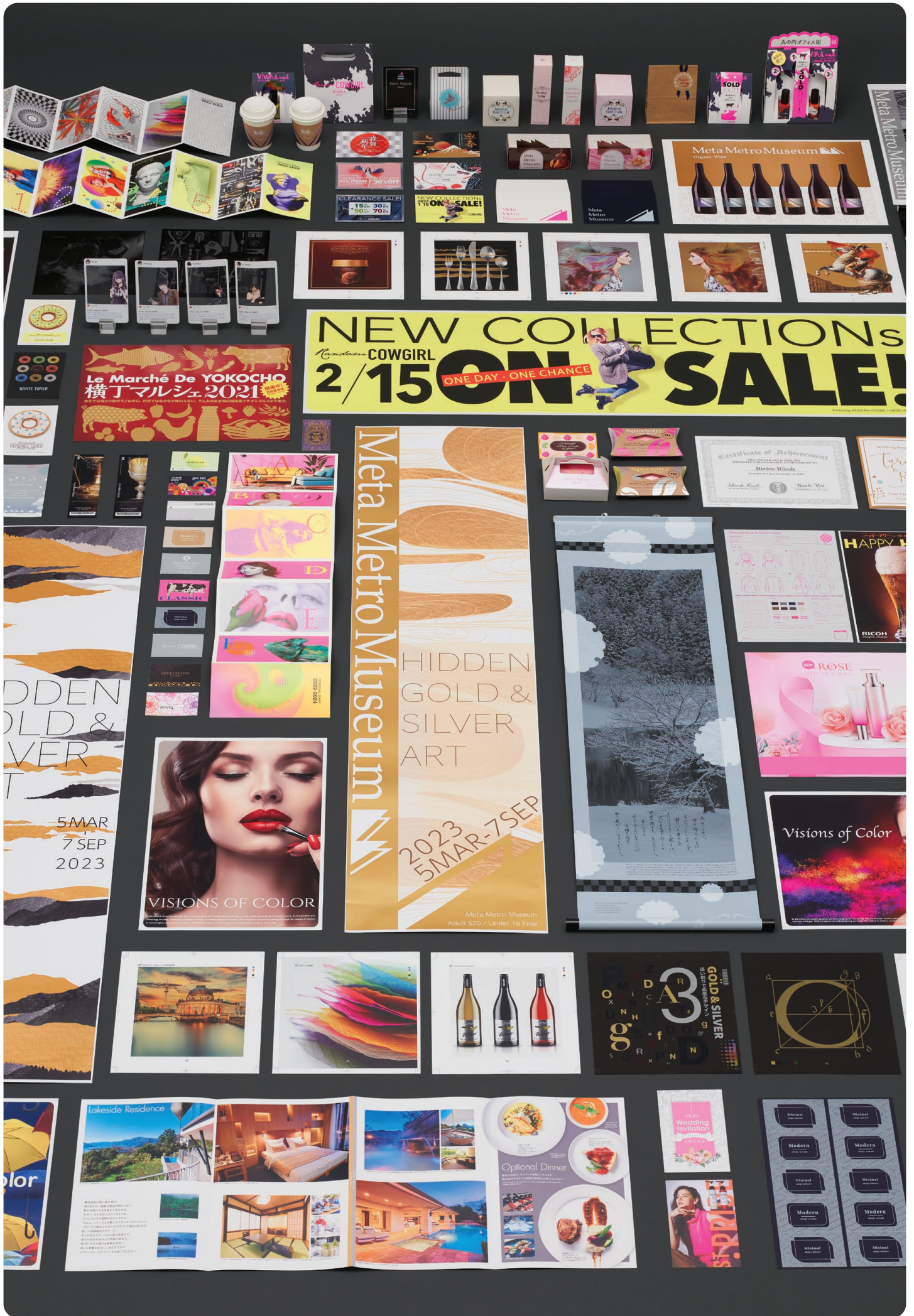
Now your print business can deliver so much more value.

The RICOH Pro C7500 supports up to seven special colours, including gold and silver. Evolved to meet fast-changing client needs, the Pro C7500 can create exciting new opportunities for your business. Enhancing your operational efficiency, the Pro C7500 partners with you in generating new ways to work. To lever these amazing capabilities, we've also significantly enhanced ease of use.

The RICOH Pro C7500: reinvent your business.



## Meet the RICOH Pro C7500.



# NEW COLLECTIONS 2/15 ON SALE!

ONE DAY · ONE CHANCE

## Le Marché De YOKOCHO 横丁マルシェ2021

### Meta Metro Museum

#### HIDDEN GOLD & SILVER ART

2023  
5 MAR - 7 SEP

Meta Metro Museum  
Adult \$20 / Under 16 Free

### VISIONS OF COLOR

### HIDDEN GOLD & SILVER ART

5 MAR - 7 SEP 2023

#### Lakeside Residence

Optional Dinner

Wedding Invitation

#### Modern Minimal

#### Certificate of Achievement

Ricco Ricco

#### ROSE WHITE LIPGAM

#### Visions of Color

#### Measurement & Color Chart

#### WHITE TOWER

#### Chocolate

#### Chocolate

#### Chocolate

#### Chocolate

#### Chocolate

# Embrace the extraordinary with the RICOH Pro C7500.

In the realm of transformative business possibilities, moments of true innovation are rare. The RICOH Pro C7500 presents you with the chance to seize that pivotal moment, rise above the ordinary, and propel your business toward unparalleled growth. Our cutting-edge digital press isn't just a colour production printer; it's your gateway to boundless potential.

This adaptable press doesn't merely handle regular four colour work with panache; it embraces the extraordinary. With creativity at its core, it accommodates specialty printing. With the fifth colour option, you can enhance your creations using specialist colours like shimmering silver, opulent gold, and vibrant neons, injecting a surge of impact that transcends the ordinary.

## Choose RICOH for unwavering productivity.

In the fast-paced world of commercial printing, time is money. From brochures to banners and packaging, your clients demand rapid, high quality results. The RICOH Pro C7500 is a game changer. Operating at an impressive speed, and transitioning seamlessly between projects, it delivers real world gains. Setup is a breeze, and with its exceptional mixed media handling capabilities, productive performance is assured.

- 2,400 x 4,800 dpi output is delivered at an impressive 85 ppm.
- Productivity upgrade option increases speed to 95 ppm.
- Graphic Communications Operating System makes setup simple.
- There's no slowing down, full speed is maintained at all media weights.
- And with consumables replenished on the fly, there's no need to stop.



# Quality and performance that transcend expectations.

## Stunning quality redefines print excellence.

Enhance your clients' marketing materials and packaging with the RICOH Pro C7500. This state of the art digital press consistently delivers print of the highest offset quality. Ricoh's advanced VCSEL imaging technology and PxP toner brings artwork to life in stunning 2,400 x 4,800 dpi resolution. Harnessing its wide colour gamut to faithfully replicate client palettes, Ricoh's ultra-fine toner produces smoothly rendered, life like colours.

- Produce stunning digital content with an offset look and feel.
- Advanced VCSEL imaging technology delivers best in class resolution.
- Reliable duplex printing with accurate front-to-back registration.
- Low melt toner reduces energy costs and broadens media horizons.
- Vivid lifelike colours, smooth tonal gradation and fine lines.



## Streamline with Fiery integration.

Ricoh's new user interface enables Ricoh and Fiery applications to be managed via the same unified command centre. Choose from two powerful Fiery controllers, both driven by Fiery FS500 Pro software for superior performance. Ricoh's Graphic Communications Operating System streamlines setup, enhancing productivity. Effortlessly supervise production with Ricoh's remote browser utility.

- Super-sized touchscreen panel with intuitive operating system.
- Choice of two powerful Fiery FS500 Pro controllers.
- Common interface for Ricoh and Fiery applications.
- Advanced features streamline processes and boost productivity.
- Browser utility enables operators to oversee multiple devices.

# Reimagine colours and ignite creativity.



## Imagine a new creative reality.

Seize the power to transform and captivate with Ricoh's innovative fifth colour option. Explore new spectra. Introduce silver, gold, neon yellow, neon pink, white, clear, and invisible red. Embrace the freedom to switch colours and incorporate different effects. Imagine pearlescent hues overlaid with a clear varnish, or vibrant neons heightened with a white underlay. It's a glimpse of what's achievable. Explore the limitless possibilities today.

- Our speciality colours add impact and appeal to print.
- Easily switch colours and incorporate different effects.
- Create stunning effects by combining gold and silver with CMYK.
- Expand your colour gamut with vibrant neons.
- Add a white underlay and accentuate designs with a clear varnish.

## Enjoy automated colour matching.

Give your business a boost with Ricoh's optional Auto Color Adjuster. Reduce profiling time and raise quality standards. Transforming colour matching, this spectrophotometer enables anyone on your team to achieve precise and repeatable results quickly across different print platforms. The easy to use system automatically compares samples, generating accurate ICC profiles that guarantee consistent, operation-wide colour matching.

- Fast and fully automated optional colour matching system.
- Reduce profiling time and raise quality standards.
- Anyone on your team can achieve repeatable results.
- System automatically generates accurate ICC profiles.
- Split jobs across devices and execute multi channel campaigns.





## Broaden your media horizons.

Embrace covers, card, inserts, and packaging with the RICOH Pro C7500. Our patented elastic fusing belt and AC transfer technology enable the digital press to print reliably onto a variety of substrates, including gloss and matt-coated offset media, textured card, metallic media, and carbonless paper. Streamlining setup, its cloud-based media library offers automated settings for both branded and unbranded media.

- Expand your media range and reduce job setup times.
- Media library streamlines setup for branded/unbranded media.
- Elastic fusing belt and AC transfer technology extend media capabilities.
- Supports media of 40 to 470 gsm and up to 1,260 mm in length.
- Gloss and matt-coated media, textured card and carbonless paper.

## Expand your production capabilities.

Effortlessly create premium products with the RICOH Pro C7500. Tailor the digital press to meet your exacting production needs. Enhance media flexibility by incorporating large capacity trays. Streamline production with an array of inline finishing solutions, including a multi-folding unit, high capacity stackers, and a range of professional booklet making systems.

- Expand your capabilities with powerful inline finishing solutions.
- Produce high impact landscape booklets with long sheet covers.
- Twin stackers collate production ready for distribution.
- Increase capacity by producing A5 booklets 2-up.



# RICOH Pro C7500

## SYSTEM SPECIFICATIONS

### GENERAL

Model Name:	Pro C7500
Technology:	4-drum (standard) / 5-drum (option) dry electrostatic transfer system with internal transfer belt
Fusing:	Oil-less, belt fusing method
Print Speed:	85 ppm (standard) 95 ppm (with productivity upgrade option)
Resolution:	VCSEL 2,400 x 4,800 dpi
Warm Up Time:	Less than 300 seconds
Dimensions (WxDxH):	1,320 x 910 x 1,816 mm (including Attention light)
Weight:	Less than 590 kg
Power Source:	220-240 V, 50/60 Hz
Power Consumption:	Less than 4,800 W

### MEDIA HANDLING

Mainframe (standard):	Tray 1: 2 x 1,000 sheets, 52.3 - 300 gsm Tray 2: 500 sheets, 52.3 - 256 gsm
1st LCIT RT5150 (option - up to three units can be attached):	Tray 3: 2,200 sheets, 40 - 470 gsm Tray 4: 2,200 sheets, 40 - 470 gsm
Bypass Tray (option):	500 sheets, 52.3 - 216 gsm
Extension Banner Sheet Tray (option):	500 sheets, 63.1 - 310 gsm (63.1 - 310 gsm, up to 487.7 mm) (63.1 - 300 gsm, up to 960 mm)
Auto Duplex:	40 - 470 gsm, up to 1,030 mm
Maximum Printable Area:	323 x 1252 mm (with optional banner sheet tray)
Maximum Media Weight:	470 gsm / 600 µm (option dependent)

### DIGITAL FRONT ENDS

#### Fiery Color Controller N-70A (option)

System Version:	Fiery FS500 Pro Software
CPU:	Intel Xeon 4214 (Silver)
Memory:	32 GB (8 x 4 GB)
Storage:	480 GB SSD for OS and Fiery software 2 x 2 TB SATA HDD
Operating System:	Windows 10 IoT Enterprise 2019 LTSC
Supported Data Formats:	Standard: Adobe® PostScript® Levels 1, 2, 3; Adobe PDF; PDF/X-1a, 3, and 4; Optimised PDF and PS; Enhanced PCL6/PCL5; JPEG; EPS; TIFF (via HotFolders); Microsoft Office document formats: doc, docx, xls, xlsx, ppt, pptx, pps, ppsx, pub (via Hot Folders); Option: IPDS (Hardware & Software).

#### Fiery Color Controller N-50A (option)

System Version:	Fiery FS500 Pro Software
CPU:	Intel Core i5-8500 Processor
Memory:	8 GB (2 x 4 GB)
Storage:	256 GB SSD for OS and Fiery software 1 TB SATA HDD
Operating System:	Windows 10 IoT Enterprise 2019 LTSC
Supported Data Formats:	Standard: Adobe® PostScript® Levels 1, 2, 3; Adobe PDF; PDF/X-1a, 3, and 4; Optimised PDF and PS; Enhanced PCL6/PCL5; JPEG; EPS; TIFF (via HotFolders); Microsoft Office document formats: doc, docx, xls, xlsx, ppt, pptx, pps, ppsx, pub (via Hot Folders); Option: IPDS (Hardware & Software).

### OTHER OPTIONS

Productivity Upgrade Unit Type S14, 5th Station Upgrade Kit Type S14, 5th Station Replacement Unit Type S14, Toner Interchange Unit Type S14, Fiery 5th Station Hardware Upgrade Kit Type S9, Vacuum Feed LCIT (RT5150), Bridge Unit (BU5010), Vacuum Feed Banner Sheet Tray, Extension Vacuum Feed Banner Sheet Tray, Multi Bypass Tray (BY5020), Multi Bypass Banner Sheet Tray, A3/11" x 17" Tray Unit (TK5010), Buffer Pass Unit Type S9, Cover Interposer Tray (CI5040), Multi-Folding Unit (FD5030), High Capacity Stacker (SK5040), Staple Finisher (SR5110), Booklet Finisher (SR5120), Extension Output Banner Sheet Tray, Trimmer Unit (TR5050).

### WORKFLOW SOLUTIONS

Ricoh TotalFlow Producer, Ricoh TotalFlow Prep and Production Manager, Ricoh ProcessDirector, BatchBuilder, FusionPro VDP Suite, Ricoh Supervisor, InfoPrint Manager, Ricoh Auto Color Adjuster, EPS MarketDirect Storefront & Cross Media, Colour Profiler Suite, Graphic Arts Pro, Impose, Compose, OL Connect Suite: CGS ORIS Lynx & PressMatcher.